

# APPLICATION FORM

## SECTION A: Personal Details to be completed by all applicants

FAMILY NAME GIVEN NAMES

ADDRESS

EMAIL

DAYTIME PHONE NUMBER

VIT REGISTRATION NUMBER (Please attach a copy of your VIT card)

### CURRENT WORKPLACE

#### SECTION B: What you are applying for

I AM APPLYING FOR

- The Vocational Graduate Certificate in Teaching Students with ASD (22097VIC) - This is a requirement for entry into the Diploma of Teaching Students with ASD (22096VIC)
- The Vocational Graduate Diploma of Teaching Students with ASD (22096VIC)
- Single unit:  Apply learning approaches to educate students with ASD (VU20288) **OR**  Manage resources to support students with ASD (VU20287)

#### SECTION C: Teaching skills/experience

Describe briefly your teaching skills/experience (please attach another sheet if insufficient space below)

I verify that I have understood the information contained in the Course Guide 2011, and that the information I have supplied is true and correct.

SIGNATURE DATE

Please return applications to Gabriella Vascotto, Autism Teaching Institute, PO Box 155, Ascot Vale, VIC 3032 Fax: (03) 9376 8021

## FEES

Fees for vocational qualifications are fully tax deductible

Vocational Graduate Certificate in Teaching Students with Autism Spectrum Disorder (ASD)	\$11,000
Vocational Graduate Diploma of Teaching Students with Autism Spectrum Disorder (ASD)	\$11,000
<b>Single unit:</b> Apply learning approaches to educate students with ASD	\$3,000
<b>Single unit:</b> Manage resources to support students with ASD	\$3,000

## PAYMENT

For scholarship recipients payment is arranged between the ATI and the Department of Education and Early Childhood Development.

For full fee paying students a deposit is to be paid at the time of enrolment for the Vocational Graduate Certificate and Diploma.

Single units must be paid in full at the time of enrolment.

Please contact the Autism Teaching Institute for the Refund Policy or go to [www.autismteachinginstitute.org.au](http://www.autismteachinginstitute.org.au)

## CONTACT

→ Tel: (03) 9372 3647

Fax: (03) 9376 8021

Postal Address: PO Box 155, Ascot Vale, VIC 3032

Web: [www.autismteachinginstitute.org.au](http://www.autismteachinginstitute.org.au)



# AUTISM TEACHING INSTITUTE

(Registered Training Organisation of Western Autistic School)

## → 2011 COURSE GUIDE

Version 4.1

Vocational Graduate Certificate in Teaching Students with Autism Spectrum Disorder (ASD) (22097VIC)

Vocational Graduate Diploma of Teaching Students with Autism Spectrum Disorder (ASD) (22096VIC)

Tel: (03) 9372 3647 Fax: (03) 9376 8021

Web: [www.autismteachinginstitute.org.au](http://www.autismteachinginstitute.org.au)

The Autism Teaching Institute (Registered Training Organisation #21709) is a not-for-profit organisation



Victorian Registration & Qualifications Authority



NATIONALLY RECOGNISED TRAINING

There are increasing numbers of students with a diagnosis of Autism Spectrum Disorder (ASD) in schools and teachers need specialised training to teach these students effectively. Autism Teaching Institute (Western Autistic School's Registered Training Organisation (RTO)) has developed competency based training courses to provide teachers with these specialist skills.

## OUR MISSION

**Our aim is to help provide the highest quality education for all students with ASD. We do this through:**

- generating and disseminating knowledge about pedagogy, and
- provision of state -of- the art training courses for teachers of students with ASD, Education Support staff and other professionals.

## TARGET GROUP

The Victorian Institute of Teaching (VIT) recognises the completion of the Vocational Graduate Diploma of Teaching Students with Autism Spectrum Disorder for registration as a "Specialist teacher".

## ENTRY REQUIREMENT

To undertake the Vocational Graduate Certificate and Graduate Diploma courses participants must be qualified teachers registered with the VIT and possess good communication and teaching skills.

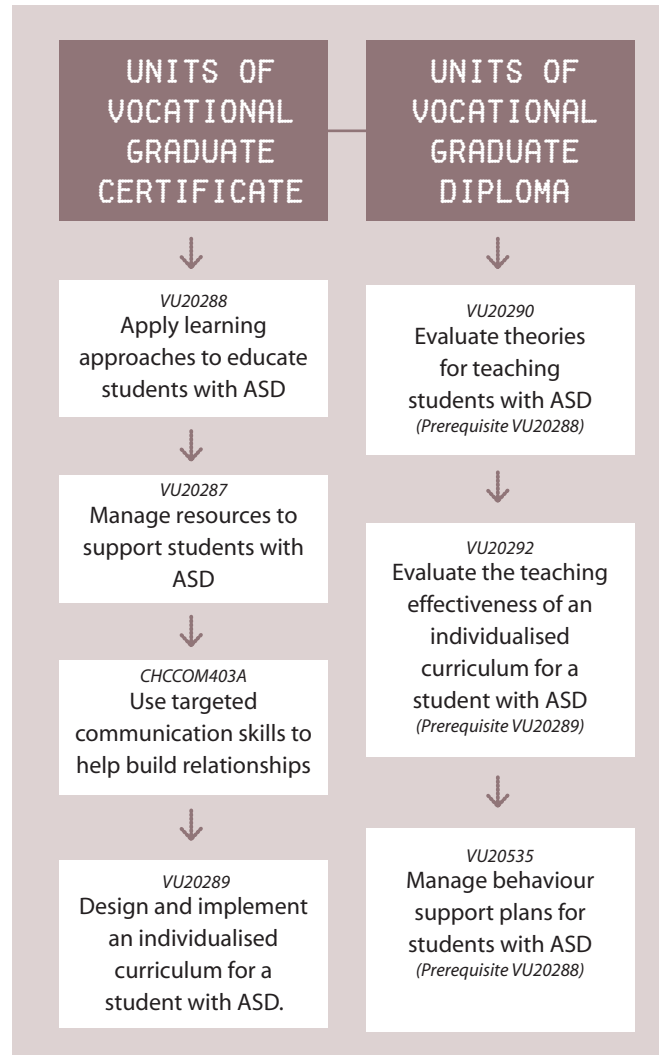
At Certificate and Diploma levels, entrants must be working with students with ASD in a classroom setting, or confirm that there is a student with ASD in the their classroom for the duration of the practicum.

Participants may also include other professionals who are interested in attaining one of the following units within the course (Apply learning approaches to educate students with ASD or Manage resources for an ASD environment) for which they will gain a Statement of Attainment.

Entrants to the **Vocational Graduate Diploma of Teaching Students with Autism Spectrum Disorder** must have already achieved the competencies defined by the **Vocational Graduate Certificate in Teaching Students with Autism Spectrum Disorder**.

## COURSE STRUCTURE & DURATION

The Vocational Graduate Certificate is nested within the Vocational Graduate Diploma



The Vocational Graduate Diploma of Teaching Students with ASD consists of 7 mandatory units of competency.

The Vocational Graduate Certificate has 4 units taken over 1 year part time study. The Vocational Graduate Diploma involves all 7 units over 2 years part-time study.

## COURSE FEATURES

An ASD-specific supervised teaching practicum of forty five days, integrated within the units is a mandatory requirement of the full Diploma course. In part time mode the practicum normally consists of thirty days of supervised special education school experience distributed equally over the two courses and may take place at:

- Western Autistic School
- ATI partner schools
- Base-school classroom under the supervision of an experienced teacher of students with ASD.

If students are not employed as a Special Education teacher, then they must spend an additional 15 days engaged in appropriate practical experiences that are approved by the Course Co-ordinator. Such experiences may include activities such as: observation, professional conferences and workshops, research conducted in appropriate learning environments, working with students with ASD in non-school environments, conducting activities for a group of ASD students, working with professional assessing ASD students.

### Assessment

There are two complementary approaches to assessment in the course, namely:

- Classroom-based assessment methods selected to suit the particular elements or units of competency and teaching scenario
- A practicum under supervision of an experienced teacher of students with ASD.

## MUTUAL RECOGNITION & RECOGNITION OF PRIOR LEARNING (RPL)

Autism Teaching Institute will recognise relevant AQF qualifications and Statements of Attainment issued by other RTOs. RPL will be granted where the participant can demonstrate that he/she has attained the competencies described in the courses, and possesses the competencies and required underpinning knowledge.

## LEARNING OUTCOMES (VET Requirements)

The Vocational Graduate Certificate provides teachers with the specialist knowledge and skills to enable them to develop and implement effective ways of teaching students with ASD. Graduates of the Vocational Graduate Diploma will also be able to conduct research and evaluate theories for teaching and teaching effectiveness, as well as managing intervention strategies for students with ASD.